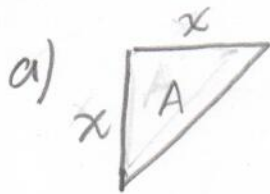
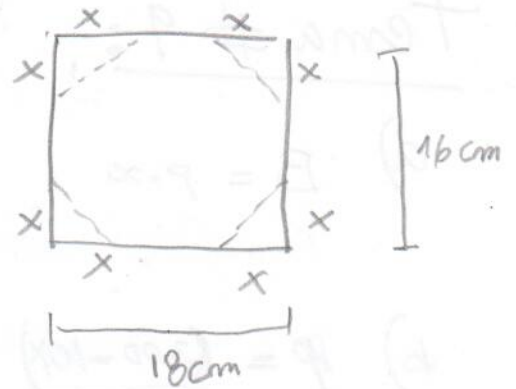


## Tema #7:

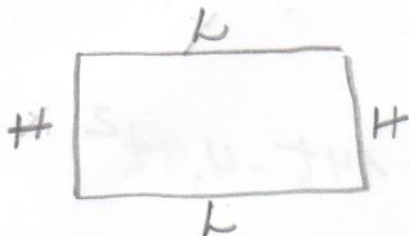


b)  $A_T = 4A$   
 $A_T = 4 \left( \frac{x \cdot x}{2} \right)$   
 $A_T = 2x^2$



c)  $A_T = 25\% (18 \cdot 16)$  *el lado es +6 cm //*  
 $2x^2 = 0.25(288)$   
 $x^2 = \frac{72}{2}$   
 $x^2 = 36$   
 $x = \pm 6$

## Tema #8:



Perimetro = 49 cm  
 Área = 111 cm<sup>2</sup>

a)  $P = 2L + 2H \rightarrow 2L + 2H = 49$

b)  $A = L \cdot H \rightarrow L \cdot H = 111$

c)  $L = \frac{111}{H}$

$2 \left( \frac{111}{H} \right) + 2H = 49$

d)  $\left( \frac{222}{H} + 2H = 49 \right) \cdot H$

$\frac{222H}{H} + 2H^2 = 49H$

$2H^2 - 49H + 222 = 0$

$H = \frac{49 \pm 25}{4} \rightarrow \begin{cases} 18.5 \text{ cm} \\ 6 \text{ cm} \end{cases}$

$H = 6 \text{ cm} \vee L = 18.5 \text{ cm}$

## Tema # 9:

a)  $B = p \cdot x$

b)  $p = (300 - 10x) \cdot (15 + 2x)$

c)  $B = 7000$

$$B = (300 - 10x) \cdot (15 + 2x)$$

d)  $7000 = 4500 + 600x - 150x - 20x^2$

$$0 = -20x^2 + 450x - 250$$

$$x = \frac{-450 \pm 427,2}{-40} \rightarrow \begin{matrix} 0,57 \\ 21,93 \end{matrix}$$

x es 22 unidades

## Tema 4

\*  $\begin{matrix} 23 \text{ cm} \\ \boxed{\phantom{000}} \\ 16 \text{ cm} \end{matrix}$

$\begin{matrix} 23+x \\ \boxed{378 \text{ cm}^2} \\ 16+x \end{matrix}$

$$*(23+x) \cdot (16+x) = 378$$

$$368 + 39x + x^2 = 378$$

$$x^2 + 39x - 10 = 0$$

$$(x+13)(x-3) = 0$$

$$x = -13$$

$$\boxed{x = 3} \checkmark$$

$$\begin{cases} l = 23 + 3 = 26 \text{ cm} \\ A = 16 + 3 = 19 \text{ cm} \end{cases}$$

## Tema #5:

$$h = 2 + 14t - 4,9t^2$$

$$* -4,9t^2 + 14t + 2 = 0$$

$$t = \frac{-14 \pm 15,3}{-9,8} \rightarrow \begin{matrix} 7,33 \text{ s} \\ -0,13 \text{ s} \end{matrix}$$